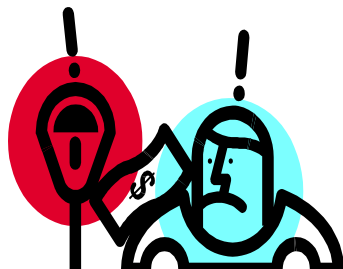


Scholar Dollar

Classroom Economy

Fines

- Color Change (-\$1/Color)
- Forgotten Materials (-\$1)
- Class behavior issue
- Hallway Ticket (-\$1)
- Lost paper
(-\$1/page)
- Messy Desk
Fine (-\$1)
- Late folder



Deposits/Payments

- +Payday (\$5/Week)
- +Classroom Job
- +Signed Folder
(Friday= \$2, Monday= \$1)
- +Good Test Grade
(\$3= 90-100, \$2= 80-89, \$1=70-79)
- +Exceptional Behavior

FINE (-\$1)

-Late folder

(-\$1/Day)



+Exceptional Behavior

+Random desk check

+Bonus

(Good sub report,
Teacher Compli-
ments)



Purchases

-Extra Pencil

-Extra Paper

-Homework

Pass

-Computer Free Time

-Space/Material Rental

-Special Privilege

-Desk Move (At teacher discretion)

